

Detection of ergot bodies in cereals by near infrared (NIR) hyperspectral imaging

Ph. Vermeulen, J. A. Fernández Pierna, P. Dardenne & V. Baeten
Wallon Agricultural Research Centre (CRA-W), Quality of Agricultural Products Department,
Chaussée de Namur, 24, 5030 Gembloux, Belgium
vermeulen@cra.wallonie.be



Introduction



Ergot on wheat ear

Contamination of cereals with ergot, formed by the fungi *Claviceps purpurea* is well known. For the farmer, the damage caused by ergot is a yield reduction: the ergot replaces the kernels in the grain ears. For the feed/food sector, the presence of ergot in feedingstuffs and agro-food products involves high toxicity risk for animal and human in relation to the alkaloid composition and content in the ergot. The neurotoxic signs comprise feed/food refusal, dizziness but also convulsions. A survey on the presence of undesirable botanic substances in feed, carried out in 2006 inside official control labs from all member states of the European Union, showed a resurgence of the ergot presence in cereals samples. To reduce the risk of poisoning, the European directive 2002/32/EC on undesirable substances in animal feed fixed a limit in the EU of 0.1% for ergot in all feedingstuffs containing unground cereals. The existing microscopy method provides an elegant early warning tool for ergot contamination but is time-consuming. The current work, performed in the framework of the CONFIDENCE project (www.confidence.eu), aims to assess by near infrared (NIR) hyperspectral imaging the presence of ergot bodies in cereals.

Material and methods

For this experiment, ergot bodies issue from different sources (Belgium, The Netherlands, Germany and Denmark) and wheat and barley kernels issue from several varieties and Belgian locations have been collected and analyzed with the near infrared (NIR) hyperspectral imaging system.



Ergot bodies



Wheat kernels



Barley kernels

The MatrixNIR™ Chemical Imaging System (Malvern instruments Ltd) used in this study is a near infrared (NIR) hyperspectral imaging spectrometer gathering spectral and spatial data (hypercube) simultaneously by recording sequential images of a pre-defined sample. Each image plane is collected at a single wavelength band. The main characteristics of the NIR camera are described in figure 1. For each image, around 10 kernels or ergot bodies were analysed. The mean spectrum of each kernel or ergot body is issue from the average of the spectra acquired on the full surface of the kernel or ergot body. The data treatment was carried out with the PLS toolbox 4.0 under Matlab 7.5.0 (R2007b).



- Wavelength range: 900-1700nm by step of 10 nm
- 1 image = 240 x 320 pixels = 76 800 spectra
- Analysed surface = 76800 pixels = +/- 5cm²
- Time of acquisition = 5 min/image
- 1 kernel = +/- 3000 pixels = 1 mean spectrum

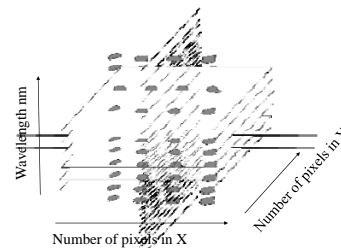


Figure 1: MatrixNIR™ Chemical Imaging System instrument and its characteristics

Results

The preliminary results show a clear discrimination between ergot bodies and wheat/barley kernels using PCA analysis. The figure 2 shows the mean spectra for ergot, wheat and barley. The figure 3 shows the PC' scores plot of those spectra.

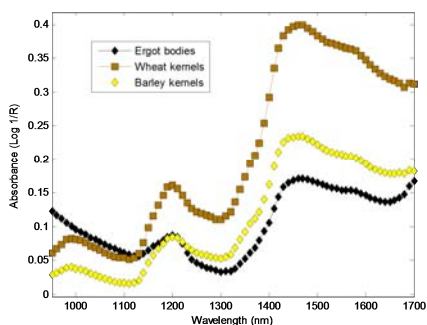


Figure 2: Hyperspectral NIR imaging mean spectra of ergot bodies and wheat/barley kernels

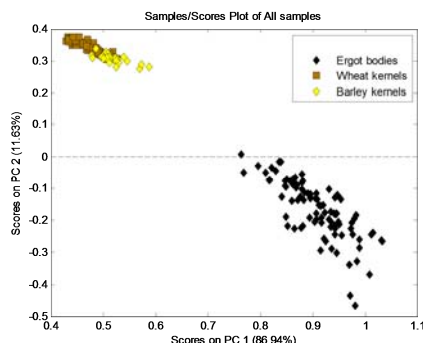


Figure 3: PC 'scores plot of the NIR spectra of ergot bodies and wheat/barley kernels

In a second step, images were acquired on barley or wheat kernels mixed with ergot as shown in the picture here below (Figure 4). The image rebuilt at 1200 nm after 1st Derivative preprocessing shows clearly the different structures: ergot body and barley kernels (Figure 5).



Figure 4: Barley sample including an ergot body

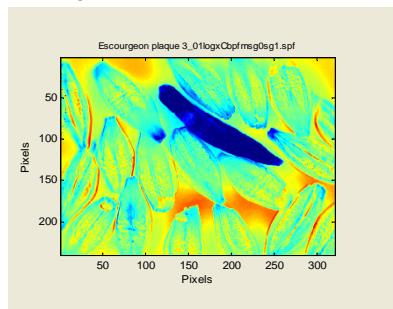


Figure 5: Image rebuilt at 1200 nm after 1st Derivative preprocessing

Conclusion

This study showed the potential of the near infrared (NIR) hyperspectral imaging to discriminate the ergot from barley and wheat kernels. Additional developments will be undertaken for the quantification of ergot bodies in the samples. Further research will be also carried out in order to develop and validate a method allowing the on-line detection of ergot bodies in cereals.

The research leading to these results has received funding from the European Community's Seventh Framework Programme (FP7/2007-2013) under grant agreement n° 211326: CONFIDENCE project (www.confidence.eu).

References

- EFSA (2005). Opinion of the Scientific Panel on Contaminants in Food Chain on a request from the Commission related to ergot as undesirable substance in animal feed. *The EFSA Journal*, **225**, 1-27.
- European Commission (2003). Directive 2002/32/EC of the European parliament and of the council of 7 May 2002 on undesirable substances in animal feed. *Official Journal of the European Communities*, **L140**, 10-21.
- Fernandez Pierna, J.A., Vermeulen, P., Buhigiro, T., Baeten, V. & Dardenne, P. (2006). *Les graines sous l'œil de l'imagerie hyperspectrale proche infrarouge*. Chimimétrie 2006, Paris, 30/11-01/12/2006.
- Baeten, V., Fernandez Pierna, J.A. & Dardenne, P. (2007). Hyperspectral imaging techniques: an attractive solution for the analysis of biological and agricultural materials. In: *Techniques and Applications of Hyperspectral Image Analysis*, Editors, Hans F. Grabb & Paul Geladi.
- van Raamsdonk, L. (2007). *A survey on the presence of undesirable botanic substances in feed in the European Union*. Wageningen, RIKILT, 22.